

Pain Isn't Always Obvious



suicideispreventable.org

Finding and Using Local Data

January 9th, 2013



Welcome!

- Please mute your line
- If you have a question, please type it into the “Questions” box or “raise your hand” by clicking the hand logo on your control panel



Poll

What type of data does your county use in your suicide prevention efforts?

- National data
- State data
- Regional data
- County data

Why?

Dispel misconceptions

Inform & evaluate suicide prevention activities

Persuade policy makers

Presentation Outline

- Traditional data sources
- Data categories
- Other data sources
- Using data – some considerations
- Counties' experience with data

Presentation Outline

- Traditional data sources
- Data categories
- Other data sources
- Using data – some considerations
- Counties' experience with data

CDC: Youth Risk Behavior Surveillance Survey (YRBSS)

Level

- National

Content

- Self-reported suicide ideation
- Self-reported suicide attempt

Timeframe

- Began in 1991
- Biannual data collection

Age

- 9th-12th grade students

Demographics

- Hispanic, AI/AN, Asian, Black, PI, White

Website

- <http://www.cdc.gov/mmwr/pdf/ss/ss6104.pdf>

SAMHSA: National Survey on Drug Use and Health (NSDUH)

Level

- National & State

Content

- Self-reported suicide ideation
- Self-reported suicide attempt

Timeframe

- Data available from 1990
- Annual data collection

Age

- Adults (18+)

Demographics

- Hispanic, AI/AN, Asian, Black, PI, White, 2 or more races

Website

- <http://www.cdc.gov/mmwr/pdf/ss/ss6013.pdf>

CDC: WISQARS

Level	<ul style="list-style-type: none">• National & State
Content	<ul style="list-style-type: none">• Non-fatal & fatal injuries by method• Cost of Injury reports
Timeframe	<ul style="list-style-type: none">• Began in 1999• Annual data collection
Age	<ul style="list-style-type: none">• All
Demographics	<ul style="list-style-type: none">• White, API, African American, AI/AN, Latino
Website	<ul style="list-style-type: none">• http://www.cdc.gov/injury/wisqars/fatal_injury_reports.html

California Health Interview Survey (CHIS)

Level

- State, Regional & County

Content

- Suicide ideation (for adults only)

Timeframe

- Began in 2001
- Biannual collection, annual in 2012

Age

- All: Adult (18+); Adolescent (12-17), Child (0-11)

Demographics

- White, Asian (multiple categories), PI, African American, AI/AN, Latino, Other

Website

- <http://ask.chis.ucla.edu/main/default.asp>

CDPH: EpiCenter

Level

- State & County

Content

- Non-fatal self-inflicted injuries & method
- Fatal self-inflicted injuries & method

Timeframe

- Began in 1991
- Annual data collection

Age

- All

Demographics

- White, API, African American, AI/AN, Latino, Other

Website

- <http://epicenter.cdph.ca.gov/ReportMenus/CustomTables.aspx>

CDPH: County Health Status Profiles

Level

- State & County

Content

- Suicide deaths

Timeframe

- Average 2008-2010

Age

- All grouped

Demographics

- All grouped

Website

- <http://www.cdph.ca.gov/programs/ohir/Pages/CHSPCountySheets.aspx>

California Suicide Prevention Program: County Data Profiles

Level	<ul style="list-style-type: none">• State & County
Content	<ul style="list-style-type: none">• Suicide deaths
Timeframe	<ul style="list-style-type: none">• 2007, 2008 and 2009
Age	<ul style="list-style-type: none">• 5+
Demographics	<ul style="list-style-type: none">• White, API, African American, AI/AN, Latino, Other
Website	<ul style="list-style-type: none">• http://www.dhcs.ca.gov/services/MH/Pages/CountyDataFiles.aspx

Presentation Outline

- Traditional data sources
- **Data categories**
- Other data sources
- Using data – some considerations
- Counties' experience with data

Data Categories

Ideation

Attempts

Deaths

Method

Know the Signs >> Find the Words >> Reach Out

Data Categories

Ideation

Attempts

Deaths

Method

Poll:

Has your county ever used suicide ideation data to inform your local suicide prevention practices?

Data Categories

Ideation

Attempts

Deaths

Method

YRBSS (National survey)

- Students who had seriously considered attempting suicide in the past 12 months

15.8% in 2011

Data Categories

Ideation

Attempts

Deaths

Method

YRBSS (National survey)

- Students who had made a plan about how they would attempt suicide in the past 12 months

12.8% in 2011

Data Categories

Ideation

Attempts

Deaths

Method

NSDUH (National survey)

- Average percentage of adults who had serious thoughts of suicide in the previous year

3.7% in 2008-2009

Data Categories

Ideation

Attempts

Deaths

Method

NSDUH (National survey)

- Average percentage of adults who had made any suicide plan in the previous year

1% in 2008-2009

What could this mean?

	Youth (YRBSS)	Adult (NSDUH)
Seriously thought about suicide in past year	15.8%	3.7%
Made a suicide plan in the past year	12.8%	1%

What could this mean?

- Youth might feel less stigma about talking about suicide
- Adulthood may give way to more stability

Data Categories

Ideation

Attempts

Deaths

Method

NSDUH (State survey)

- Average percentage of adults in California who had serious thoughts of suicide in the previous year

3.4% in 2008-2009

Data Categories

Ideation

Attempts

Deaths

Method

NSDUH (State survey)

- Average percentage of adults in California who had made any suicide plan in the previous year

0.9% in 2008-2009

Data Categories

Ideation

Attempts

Deaths

Method

CHIS (State survey)

- Adults who ever seriously thought about committing suicide

8.7% in 2009

What could this mean?

	<u>Ever</u> experienced (CHIS)	Experience in <u>past year</u> (NSDUH)
Californian adults who seriously about suicide	8.7%	3.4%

Data Categories

Ideation

Attempts

Deaths

Method

CHIS

(Northern / Sierra Regions survey)

- Adults who ever seriously thought about committing suicide

13.4% in 2009

Data Categories

Ideation

Attempts

Deaths

Method

CHIS

(Northern / Sierra Regions survey)

- Adults who seriously thought about committing suicide in the past year

2.1% in 2009

Data Categories

Ideation

Attempts

Deaths

Method

CHIS (Humboldt County survey)

- Adults who ever seriously thought about committing suicide

12.1% in 2009

Data Categories

Ideation

Attempts

Deaths

Method

Poll:

Has your county ever used suicide attempt data to inform your local suicide prevention practices?

Data Categories

Ideation

Attempts

Deaths

Method

YRBSS (National survey)

- Youth reporting attempting suicide in the past year

7.8% in 2011

Data Categories

Ideation

Attempts

Deaths

Method

YRBSS (National)

- Youth reporting to have self-injured resulting in doctor treatment in the past year

2.4% in 2011

Data Categories

Ideation

Attempts

Deaths

Method

EpiCenter (State)

- Non-fatal self-inflicted injuries leading to hospitalization

In 2011,

Cases: 15,435

Rate: 40.8/100,000

Data Categories

Ideation

Attempts

Deaths

Method

EpiCenter (Superior Region)

- Non-fatal self-inflicted injuries leading to hospitalization

In 2011

Cases: 644

Rate: 60.2/100,000

Data Categories

Ideation

Attempts

Deaths

Method

EpiCenter (Lake County)

- Non-fatal self-inflicted injuries leading to hospitalization

In 2011

Cases: 47

Rate: 70.1/100,000

Data Categories

Ideation

Attempts

Deaths

Method

EpiCenter (State)

- Non-fatal self-inflicted injuries leading to Emergency Department treat & release

In 2011

Cases: 29,137

Rate: 77.6/100,000

Data Categories

Ideation

Attempts

Deaths

Method

EpiCenter (Superior Region)

- Non-fatal self-inflicted injuries leading to Emergency Department treat & release

In 2011

Cases: 1,621

Rate: 151.6/100,000

Data Categories

Ideation

Attempts

Deaths

Method

EpiCenter (Lake County)

- Non-fatal self-inflicted injuries leading to Emergency Department treat & release

In 2011

Cases: 138

Rate: 205.9/100,000

Data Categories

Ideation

Attempts

Deaths

Method

Poll:

Has your county ever used suicide death data to inform your local suicide prevention practices?

Data Categories

Ideation

Attempts

Deaths

Method

EpiCenter (State)

- Death due to self-inflicted injuries

In 2010

Cases: 3,823

Rate: 10.2/100,000

Data Categories

Ideation

Attempts

Deaths

Method

EpiCenter (Superior Region)

- Death due to self-inflicted injuries

In 2010

Cases: 226

Rate: 21.5/100,000

Data Categories

Ideation

Attempts

Deaths

Method

EpiCenter (Kings County)

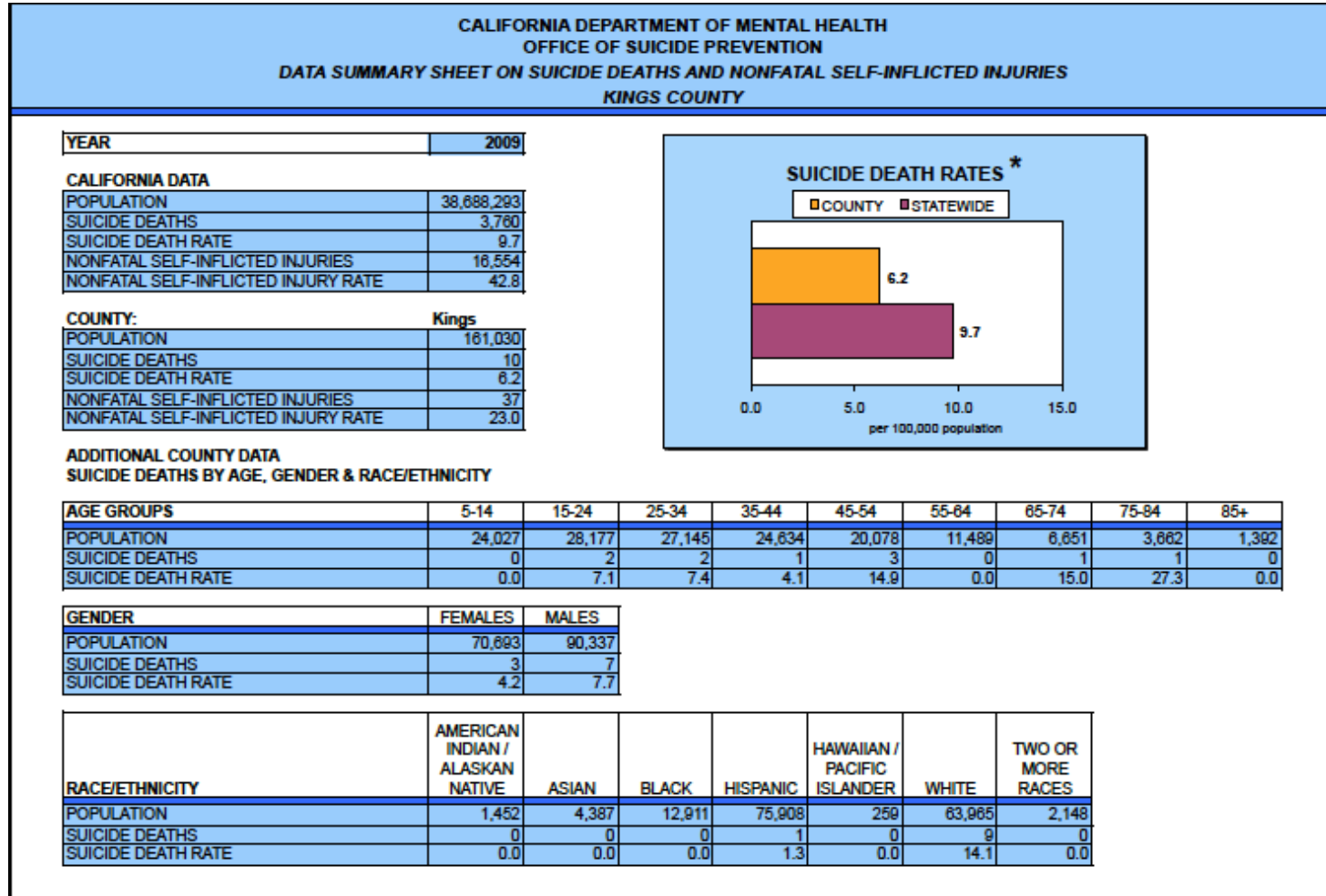
- Death due to self-inflicted injuries

In 2010

Cases: 10

Rate: 6.5/100,000

County Data profiles



Know the Signs >> Find the Words >> Reach Out

Data Categories

Ideation

Attempts

Deaths

Method

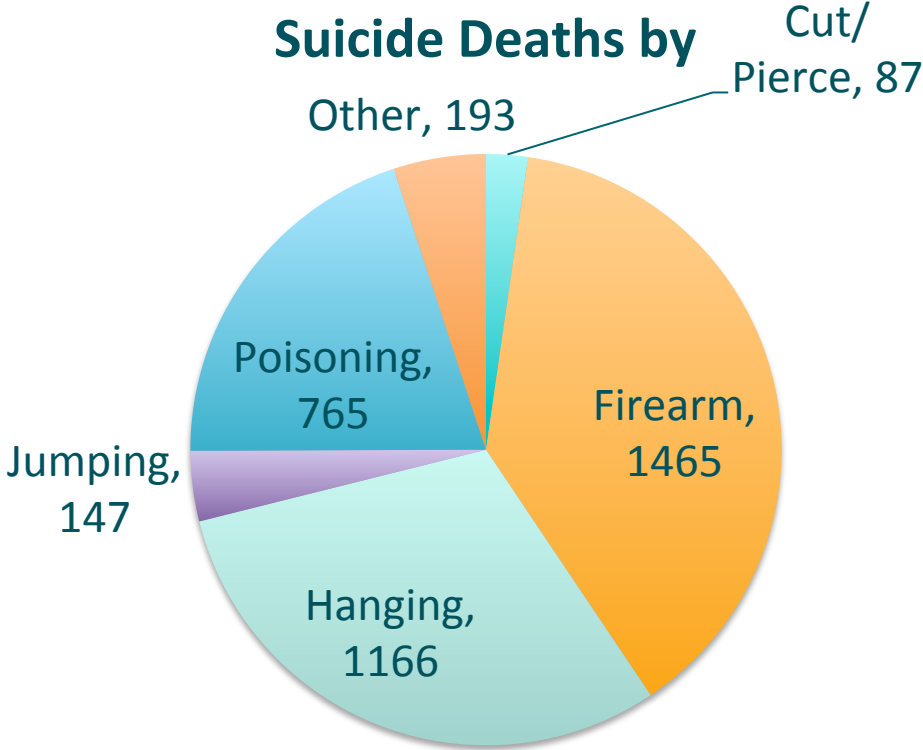
Poll:

Has your county ever used data on suicide method to inform your local suicide prevention practices?

Data Categories

Ideation
Attempts
Deaths
Method

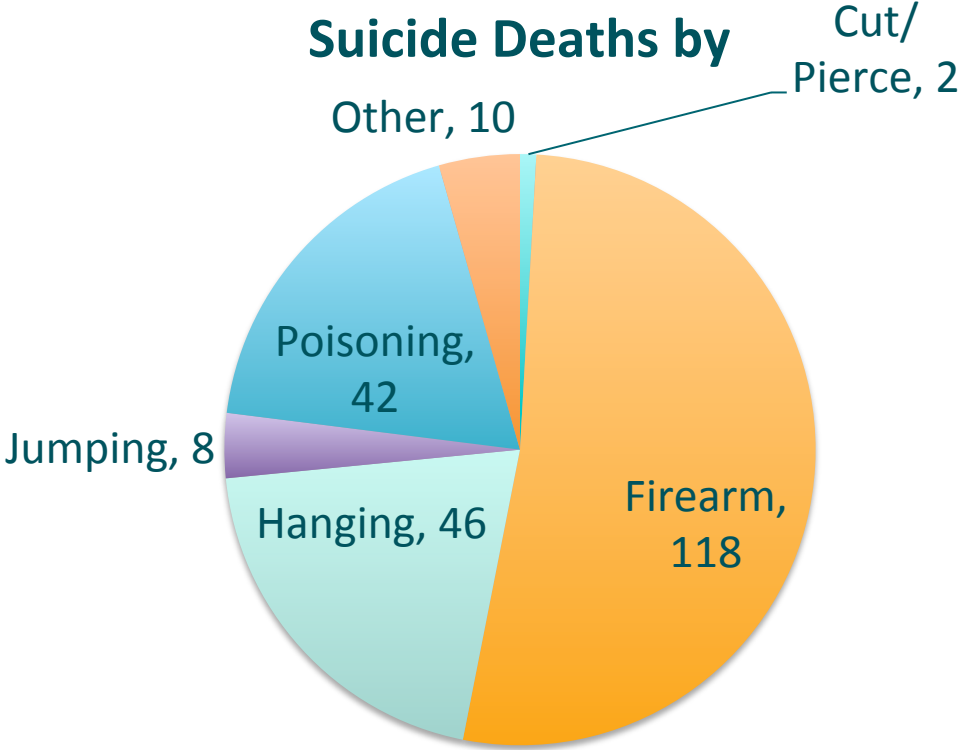
EpiCenter (State, 2010)



Data Categories

- Ideation
- Attempts
- Deaths
- Method

EpiCenter (Superior Region, 2010)



Data Categories

Ideation

Attempts

Deaths

Method

EpiCenter (Trinity County, 2010)

- Suicide deaths by:
 - Firearm: **4**
 - Hanging: **1**

Presentation Outline

- Traditional data sources
- Data categories
- **Other data sources**
- Using data – some considerations
- Counties' experience with data

Type in your thoughts!

Is your County using any other type of data in your suicide prevention work?

Other data sources

Co-Morbidity

Financial
Impact

Hotline &
Local Service
Use

Other data sources

Co-Morbidity

Financial
Impact

Hotline &
Local Service
Use

Behavioral Risk Factor Surveillance System (BRFSS)

- National & State Data (1984-2011)
- <http://apps.nccd.cdc.gov/BRFSS/index.asp>

Other data sources

Co-Morbidity

Financial
Impact

Hotline &
Local Service
Use

County Health Rankings and Roadmaps

Shasta County:

- 48 Mental Health Providers (1:3,761)
- 22% adults drink excessively
- 15% have inadequate social support

Other data sources

Co-Morbidity

Financial
Impact

Hotline &
Local Service
Use

County Health Rankings and Roadmaps

Visit

www.countyhealthrankings.org
to explore your county.

Other data sources

Co-Morbidity

Financial
Impact

Hotline &
Local Service
Use

WISQARS

Cost of Injury Reports

Deaths and Type of Cost			Intent Suicide
Mechanism			
All Mechanisms	Deaths	--	3,206
	Medical Cost	Average	\$3,542
		Total	\$11,354,000
	Work Loss Cost	Average	\$1,100,229
		Total	\$3,527,334,000
	Combined Cost	Average	\$1,103,770
		Total	\$3,538,688,000

Other data sources

Co-Morbidity

Financial
Impact

Hotline &
Local Service
Use

Local crisis hotlines

- Which hotlines serve your county?
- What kind of data logs do they keep?

Other data sources

Co-Morbidity

Financial
Impact

Hotline &
Local Service
Use

National Suicide Prevention Lifeline, by CA County

Call volume by county

This report includes the number of calls originating from California counties that were answered by crisis centers in the Lifeline network, between January 01, 2011 and December 31, 2011. The call volume for each county is broken down by network and location of the center that answered.

	General Lifeline, Answered In-state	General Lifeline, Answered Out-of-state	Spanish Lifeline	Veterans Hotline	Total
Alameda	4,337 86%	33 1%	120 2%	570 11%	5,060
Amador	76 72%	3 3%	3 3%	23 22%	105
Butte	387 62%	14 2%	10 2%	213 34%	624
Calaveras	90 89%	0 0%	0 0%	11 11%	101
Colusa	23 77%	0 0%	3 10%	4 13%	30
Contra Costa	1,916 79%	18 1%	44 2%	452 19%	2,430

Other data sources

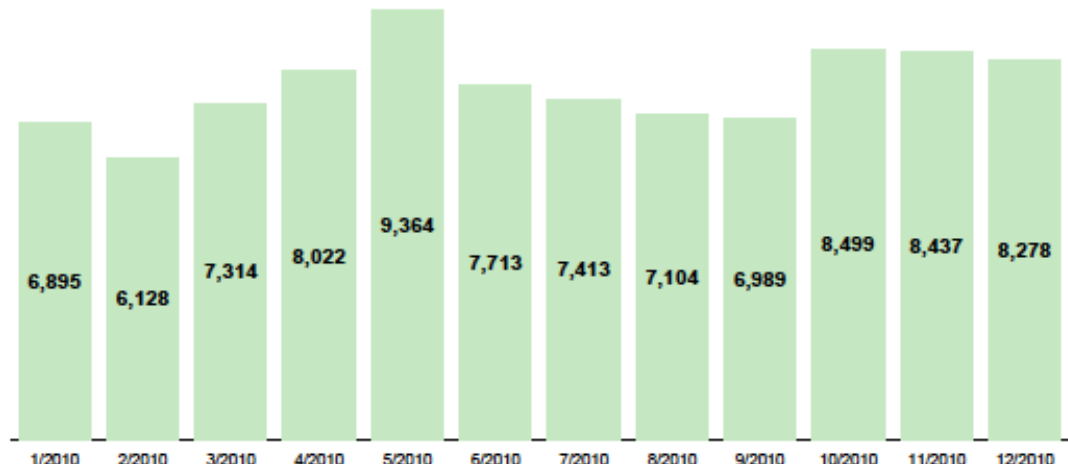
Co-Morbidity

Financial
Impact

Hotline &
Local Service
Use

National Suicide Prevention Lifeline, California

Calls per month



Other data sources

Co-Morbidity

Financial
Impact

Hotline &
Local Service
Use

National Suicide Prevention Lifeline

To get your County data,
contact **Carole Ludwig** at
cludwig@mhaofnyc.org

Other data sources

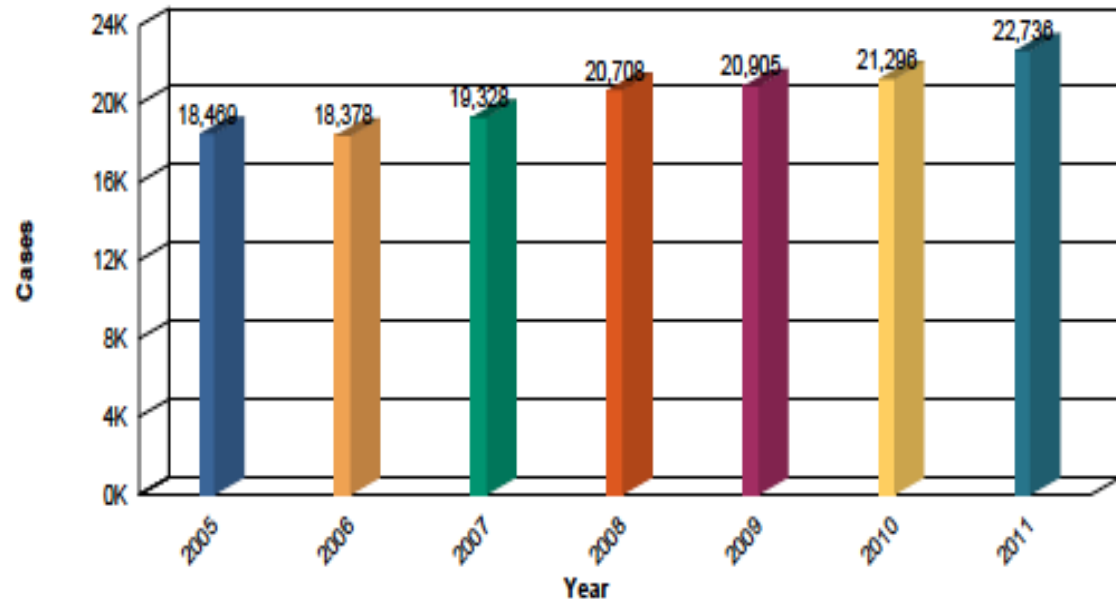
Co-Morbidity

Financial
Impact

Hotline &
Local Service
Use

Poison Control System Calls

Suspected Suicides by Year



Other data sources

Co-Morbidity

Financial
Impact

Hotline &
Local Service
Use

Poison Control System Calls

To get your County data,
contact Dr. Stuart Heard at the
California Poison Control
System
(seheard@calpoison.org)

Other data sources

Co-Morbidity

Financial
Impact

Hotline &
Local Service
Use

Others?

- Hospitals?
- Coroner?
- Mental Health or Public Health Department?

Presentation Outline

- Traditional data sources
- Data categories
- Other data sources
- **Using data – some considerations**
- Counties' experience with data

Beneficial uses of data

- Defines a target population
- Reduces misconceptions
- Provides context to local issue of suicide

Cautionary notes

- Be careful of rates, especially in small counties

$$\begin{array}{ccc} 5 \text{ suicides} & & 36 \text{ suicides} \\ \text{-----} & = ? = & \text{-----} \\ 13,878 \text{ pop.} & & 100,000 \text{ pop.} \end{array}$$

Always examine the sum of multiple years!

Cautionary notes

- Don't sensationalize the data
- Consider social math

“183 suicides have occurred in Nevada County in the past 10 years”

vs.

“As many people died by suicide in the past 10 years in Nevada County as to fit almost 4 school buses”

Presentation Outline

- Traditional data sources
- Data categories
- Other data sources
- Using data – some considerations
- **Counties' experience with data**

Tulare County's Experiences

- Types of data used
- How is the data used
- Key learning experiences in using data

Tulare County's Experiences

- Presenter: Noah Whitaker, MBA
 - Community Outreach Manager, Tulare County Health & Human Services Agency
 - nwhitake@tularehhsa.org



Questions & Discussion

If you have a question, please type it into the “Questions” box or “raise your hand” by clicking the hand logo on your control panel



Thank you!

Theresa Ly
tly@edc.org



Next small county webinar:

“Responding after a suicide in a rural county”

Wednesday, February 13th, 1:30-2:30pm

Please fill out
the
Evaluation!

Webinar will be archived on
www.yourvoicecounts.org